

75
ALBERT BLACK
ABST. 98

"1066.98 Ac."
G.W. Lewis
to
T.H. Ivy
Vol. 75 p. 428 D.R.
3-27-1915

2
J.S. GRANT

E. PART SURVEY 2
G.W. DELONG ORIGINAL GRANTEE
ABST. 8607

"7124.42 Ac."
Nolan Ryan
to
Lee Concho Valley Limited Partnership
Doc No. 651942 O.P.R.
5-15-2008
also see
Vol. 1155 p. 356 O.P.R.

S.W. PART SURVEY 2
G.W. LEWIS ORIGINAL GRANTEE
ABST. 8667

Second Tract
Vol. 212 p. 475 D.R.

73
JAMES ELDRIDGE
ABST. 173

First Tract
Vol. 212 p. 475 D.R.

958.72 Acres

Approx. 2.6 acres not included in
Vol. 212 p. 475 D.R. but included
in 1973 Simpson survey. See Report.

W. PART SURVEY 1827 1/2
Fifth Tract
Vol. 212 pg. 475 D.R.
also see
Vol. 700 p. 212 D.R.

"7124.42 Ac."
Nolan Ryan
to
Lee Concho Valley Limited Partnership
Doc No. 651942 O.P.R.
5-15-2008
also see
Vol. 1155 p. 356 O.P.R.

1827 1/2
T. McCLURE
ABST. 5744

1827
JOHANN ZERBACH
ABST. 4217

First Tract
Vol. 212 p. 475 D.R.

69
C.A. CLARK
ABST. 122

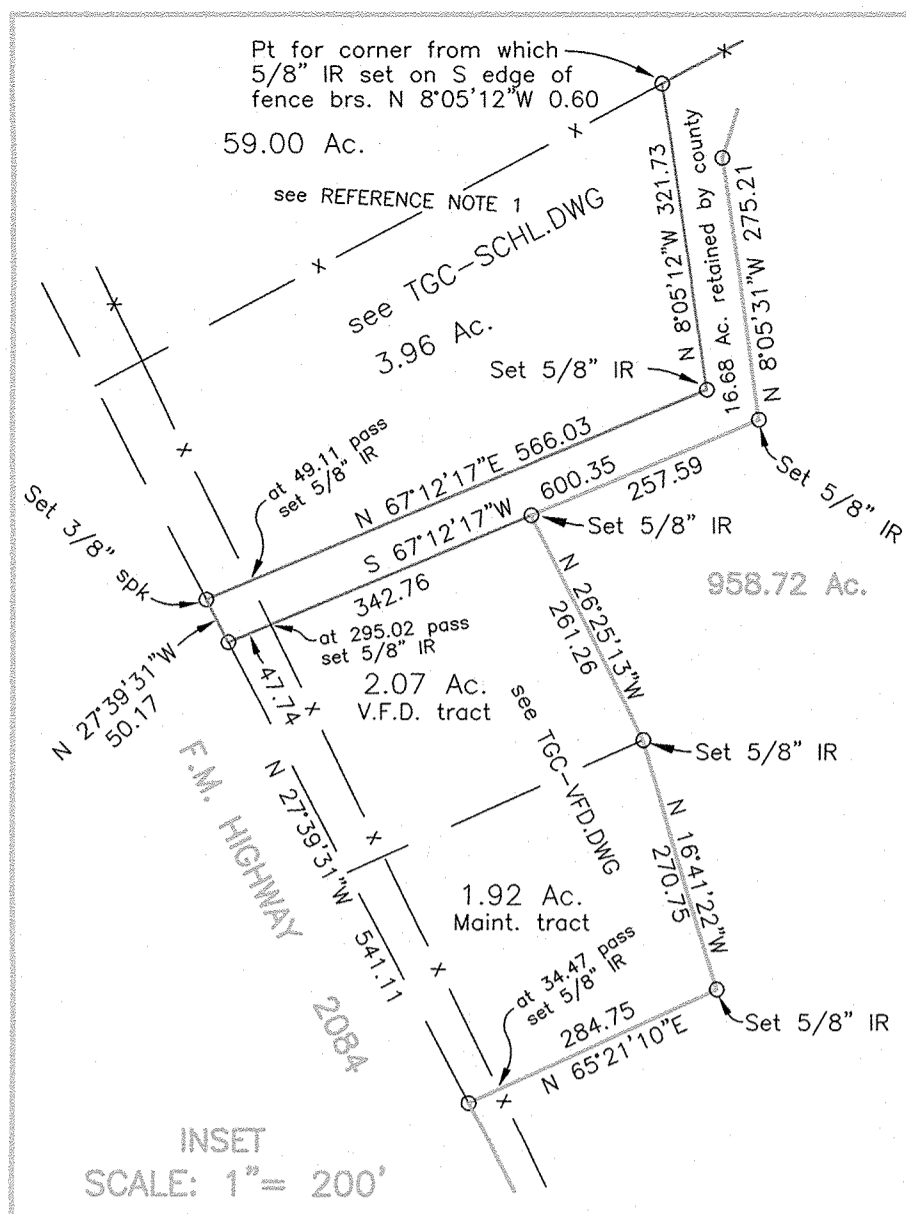
"7124.42 Ac."
Nolan Ryan
to
Lee Concho Valley Family Limited Partnership
Doc No. 651942 O.P.R.
5-15-2008
also see
Vol. 1155 p. 356 O.P.R.

PLAT SHOWING
958.72 ACRES OF LAND
OUT OF SURVEYS AS SHOWN
TOM GREEN COUNTY, TEXAS

Prepared from surveys made on the ground prior to
February 4, 2016.

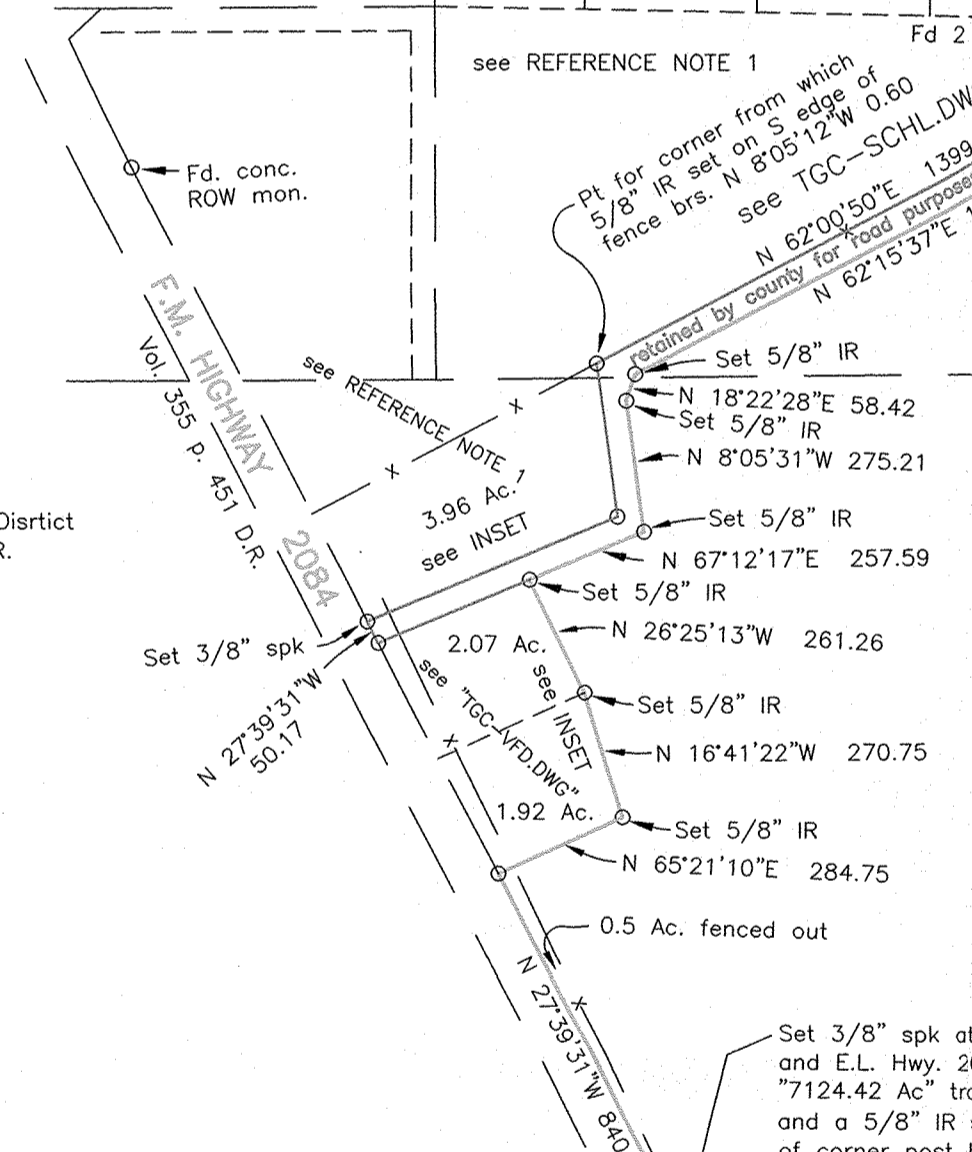
Thomas J. Houston
Thomas J. Houston
Registered Professional Land Surveyor No. 4261
FIRM NO. 10045600

OFFICE OF
WILSON LAND SURVEYING, INC.
1514 W. BEAUREGARD AVE.
P. O. BOX 3326 PH. 325-653-3916
SAN ANGELO, TEXAS 76902

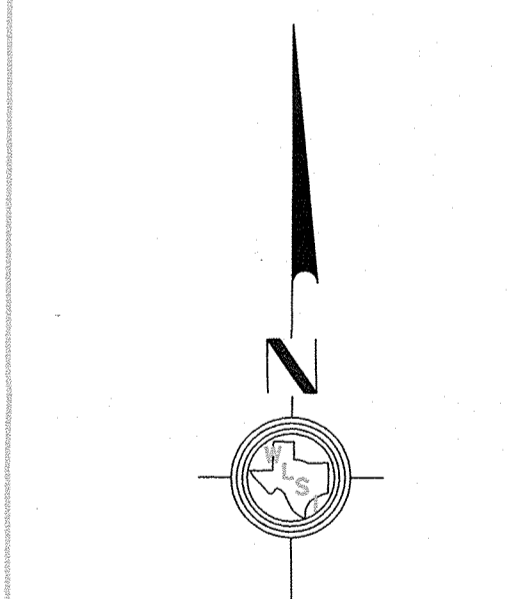


TOWN OF CHRISTOVOL
Vol. 65 p. 563 D.R.
NW cor 16.68 Ac. and
a SW cor 958.72 Ac.
from which a 3/8\"/>

VOSS ADDITION
Vol. 1 p. 161 P.R.
Fourth Tract
Vol. 212 p. 475 D.R.



REFERENCE NOTE 1
Tom Green County
to
Christoval Independent School District
Doc No. 201608274 O.P.R.



- = Fd fence angle or corner post for corner.
- = Point unless otherwise noted.
- ⊙ = Corner as found or established by witnesses.
- = fence
- - - = survey line

NOTES
Courses and distances shown hereon are of the Texas Coordinate System of 1927 - Central Zone. Acreage shown are based on surface horizontal distances. Bearing basis is E.L. Hwy 2084. All set 5/8\"/>

For the purpose of this survey the exact location of the underlying surveys was not determined. Survey lines shown are approximate and are for pictorial purposes only.

Also see accompanying descriptions, plats and report.

Also see plat by Rosco M. Simpson dated 11-29-1973 and letter to John Callison, County Commissioner dated 12-3-1973

Pt for SE cor 958.72 acres at intersection of S.L. Survey 1827 and W.L. "7124.42 Ac." tract from which 1/2\"/>